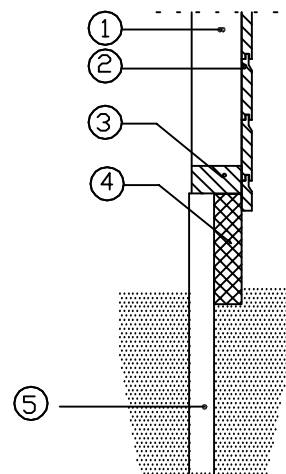
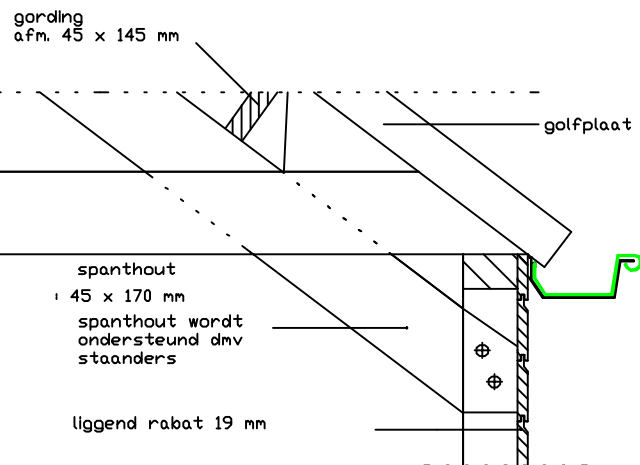
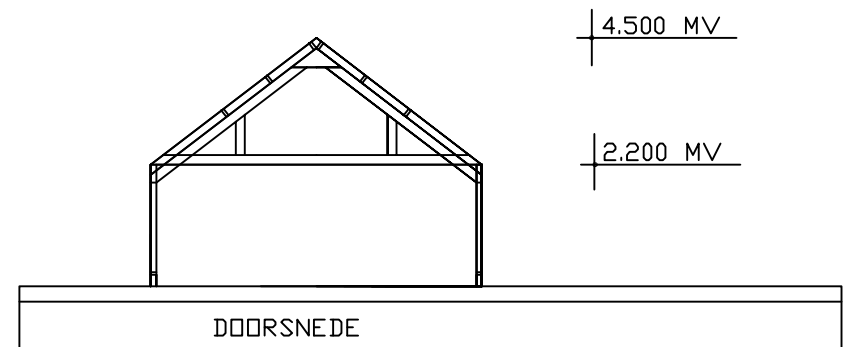


spanthout : 45 x 170 mm
gordingen : 45 x 145 mm



- ① regelwerk 38x89 mm
- ② liggend rabat 19 mm
- ③ regelwerk 38x89 mm
- ④ hardhouten balk 45x195 mm
- ⑤ piketten 45x95 mm hardhout lengte 1250 mm
- ⑥ dakbedekking: golfplaat, kleur zwart
- ⑦ dakbeschiëting:
- ⑧ deuren: opgeklampt
- ⑨ ramen: meranti 890 X 670

OPDRACHTGEVER:	KAD. GEM. :
	SECTIE :
	NUMMER :
	SCHAAL :

TYPE :
SCHAAL : 1:100
GET :
patent pending in principal countries of the world

HOUTBOUW
HIEMSTRA

