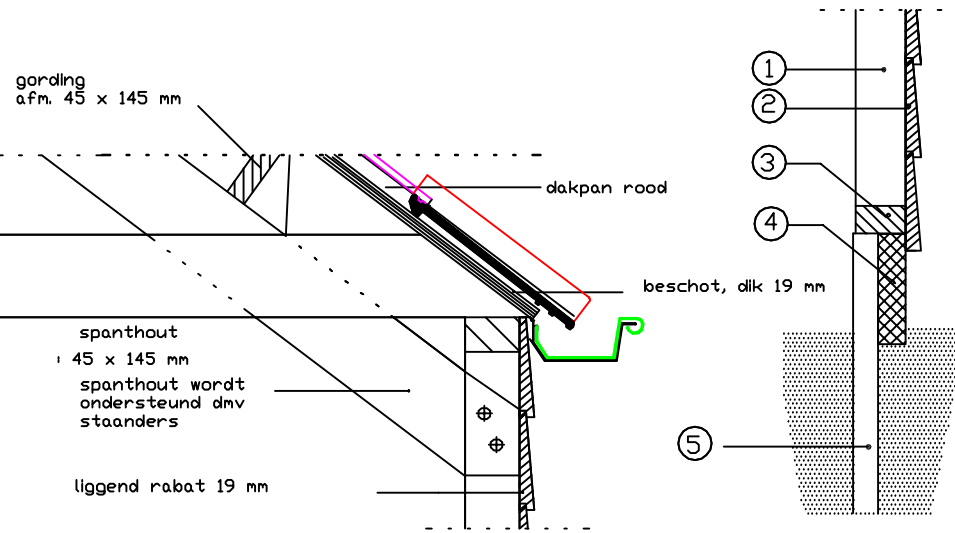
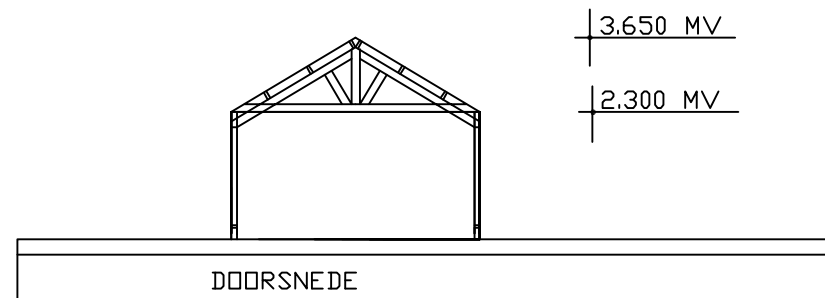
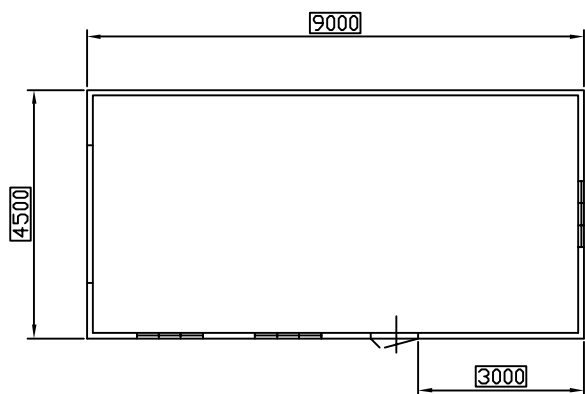


spanthout : 45 x 145 mm
 gordingen : 45 x 145 mm



- ① regelwerk 38x89 mm
- ② Zweeds rabat 12/27/180 mm
- ③ regelwerk 38x89 mm
- ④ hardhouten balk 45x195 mm
- ⑤ piketten 45x95 mm hardhout lengte 1250 mm
- ⑥ dakbedekking: dakpan , kleur rood
- ⑦ dakbeschiëting: dakbeschoot 19 mm
- ⑧ deuren: opgeklampt
- ⑨ ramen: meranti 1200 X 890

OPDRACHTGEVER: ██████████	KAD. GEM. :
██████████	SECTIE :
██████████	NUMMER :
	SCHAAL :

TYPE :
SCHAAL : 1:100
GET :
patent pending in principal countries of the world

HOUTBOUW
HIEMSTRA

